

Forest Heights Design Guidelines

May 22, 2019

TOWNHOMES AT FOREST HEIGHTS

EXTERIOR

DESIGN CONSIDERATIONS, SPECIFICATIONS AND FEATURES

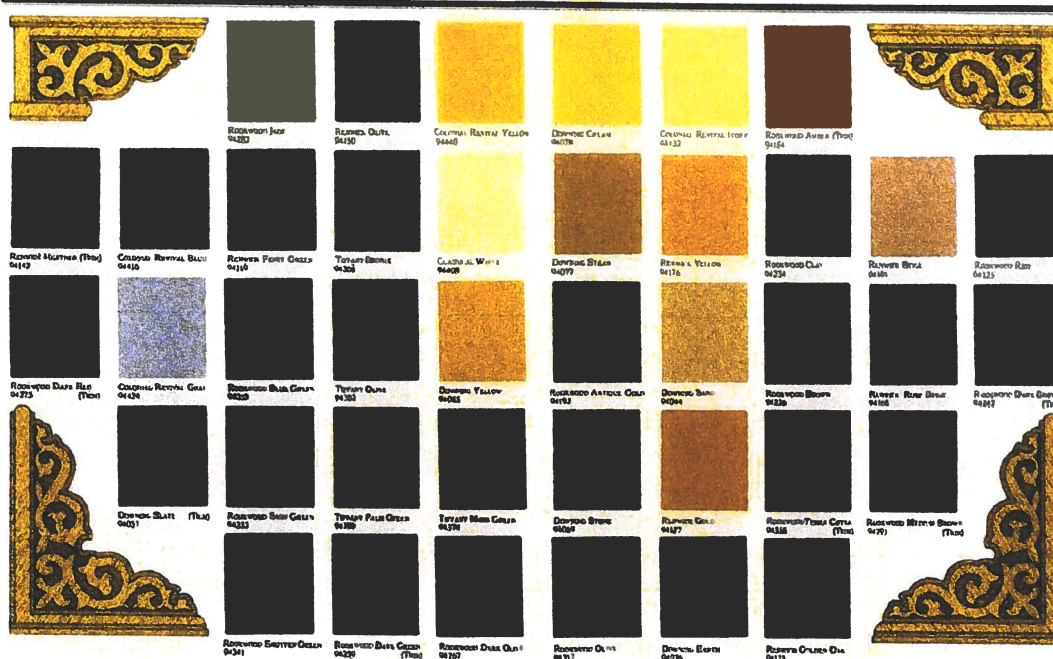
- 1. Foundations**
 - a. Raised slab and slab-on-grade
 - b. All sides must be parged or painted
- 2. Exterior Walls**
 - a. Preferred Siding Materials
 - i. Vinyl siding: .042 gauge minimum thickness
 - ii. Possibly brick or stone accents
- 3. Ceiling Framing**
 - a. First floor 9' ceiling height, Second floor 8' ceiling height
- 4. Roofing**
 - a. Shingles Dimensional/Architectural, Fungus/Algae Resistant with a minimum 25-year warranty
 - b. Shingle colors uniform throughout Townhome project
- 5. Gutters and Downspouts**
 - a. Gutters and downspouts with splash blocks or corrugated plastic pipes buried
- 6. Windows**
 - a. Windows with screens; if single-hung, may be factory applied half-screen.
 - b. Tilt-sash
 - c. Low-E, thermal insulated.
 - d. Muntins/Grilles between glass.
 - e. Raised panel window shutters vinyl - per plan
- 7. Entrances and Exterior Detail**
 - a. No unpainted columns or railings visible on the front of the house
 - b. Prefinished aluminum cladding on all exterior wood trim - white
 - c. Vinyl attic vents and soffits - if required
 - d. Raised panel entrance door
 - e. Dead bolt lock(s)
- 8. Paint** – Front doors colors similar to Sherwin Williams Heritage Colors
- 9. Garage Doors** - On some units - White
- 10. Walks and Driveways**
 - a. Concrete walkway from steps to driveway, as appropriate (3' width)
 - b. Concrete driveways broomed gray finish

Sherwin Williams proudly presents Heritage Colors™ - 40 historic Nineteenth Century hues that capture the grace and elegance of another era. Heritage Colors have been authenticated by Dr. Roger Moss, and documented in his book, *Century of Color: Exterior Decoration for American Buildings, 1820-1920*.

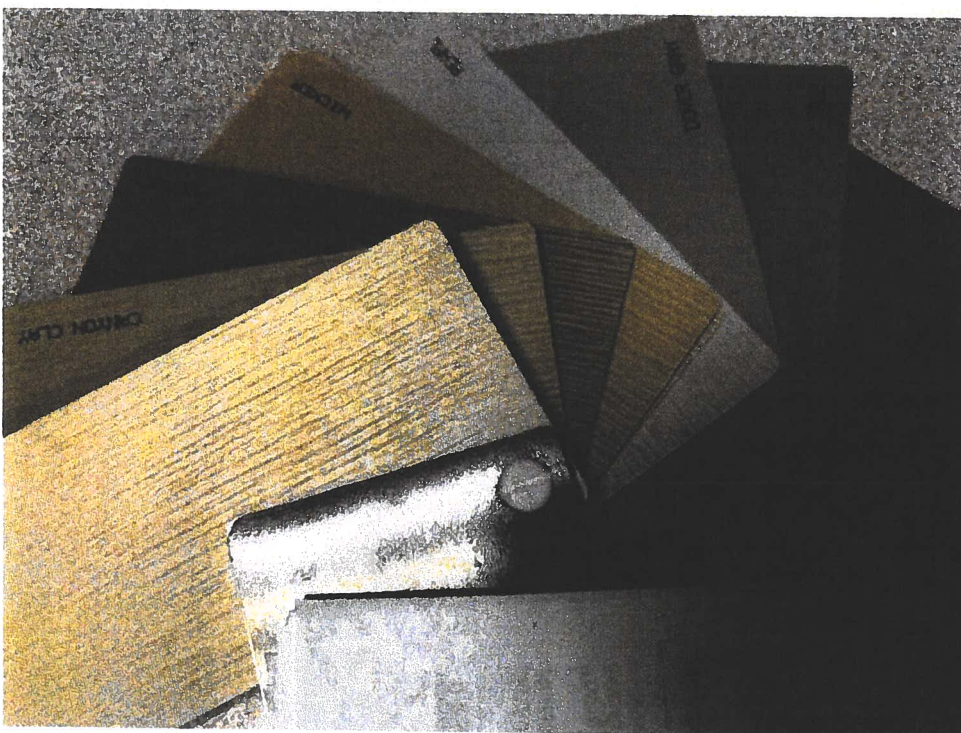
Restore classic beauty to your Traditional or Victorian styled home with a selection from this distinguished collection - the best of America's past. Heritage Colors are available in **® SUPERPAINT™ Exterior Latex House & Trim Paint™**. The best paint ever made by Sherwin Williams. **® SWP® Gloss House & Trim Paint (Oil Base)**.



HERITAGE COLORS™ 1820-1920

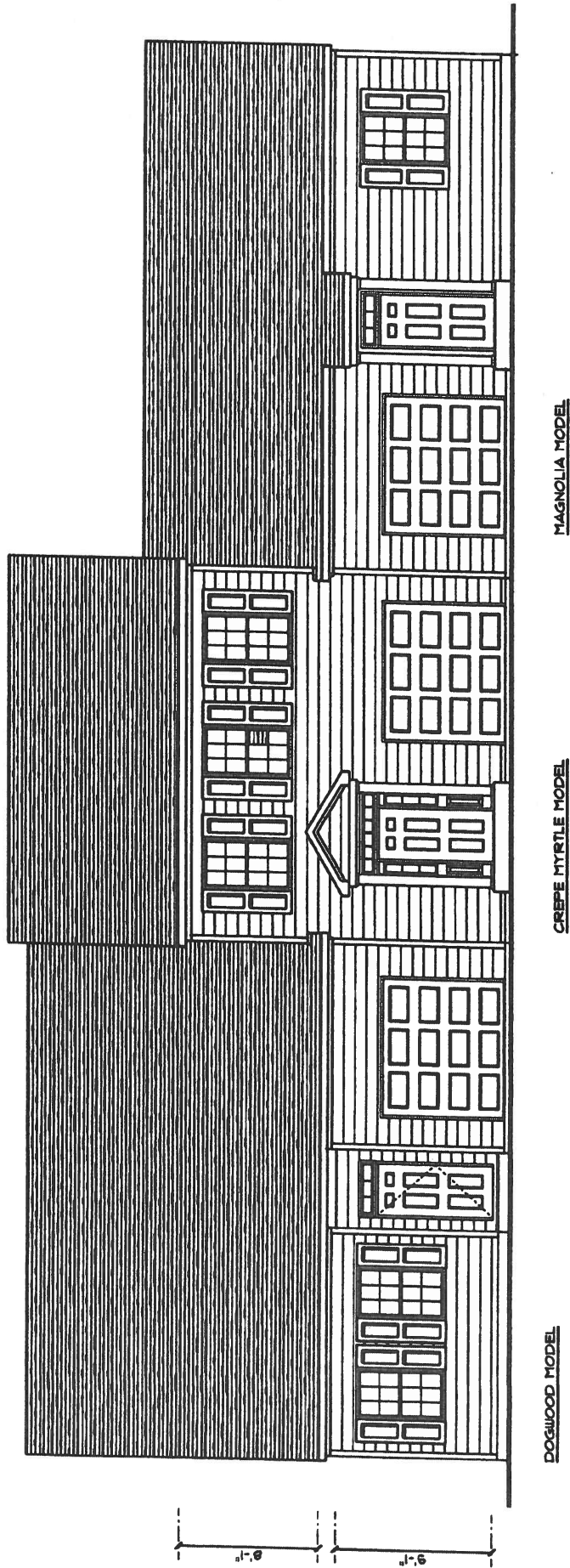


Suggested Front Door Colors

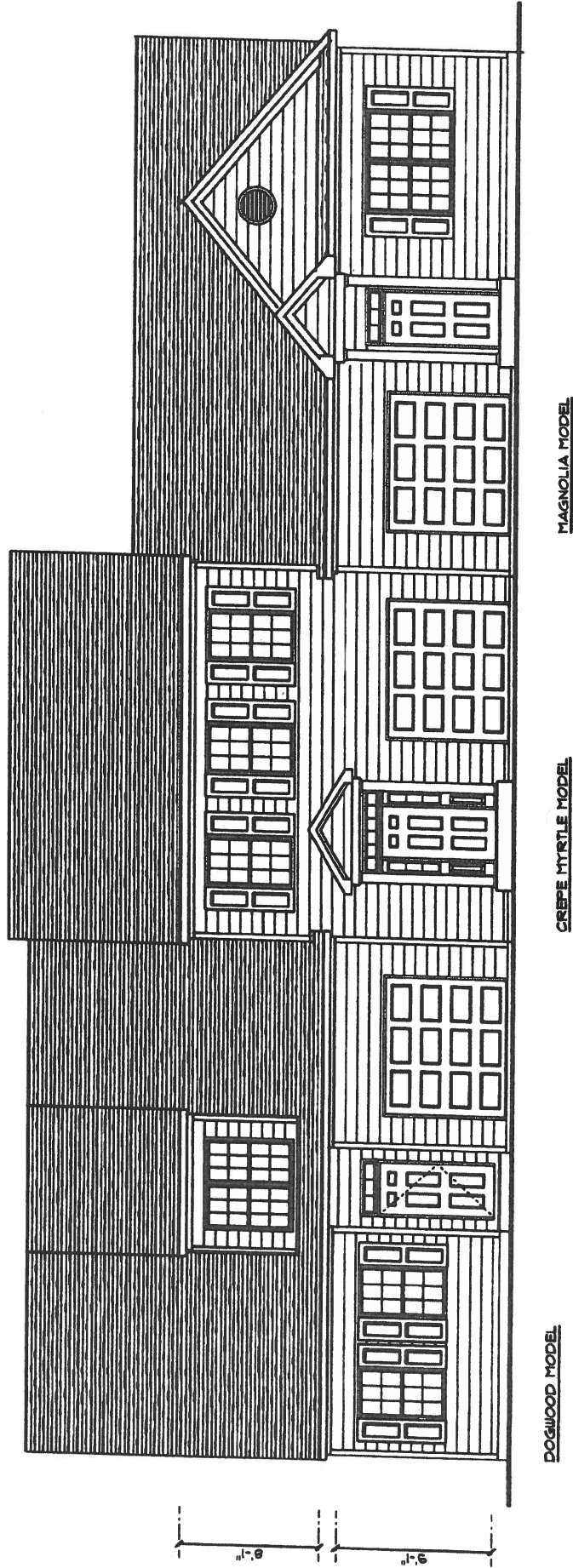


Suggested Siding Colors

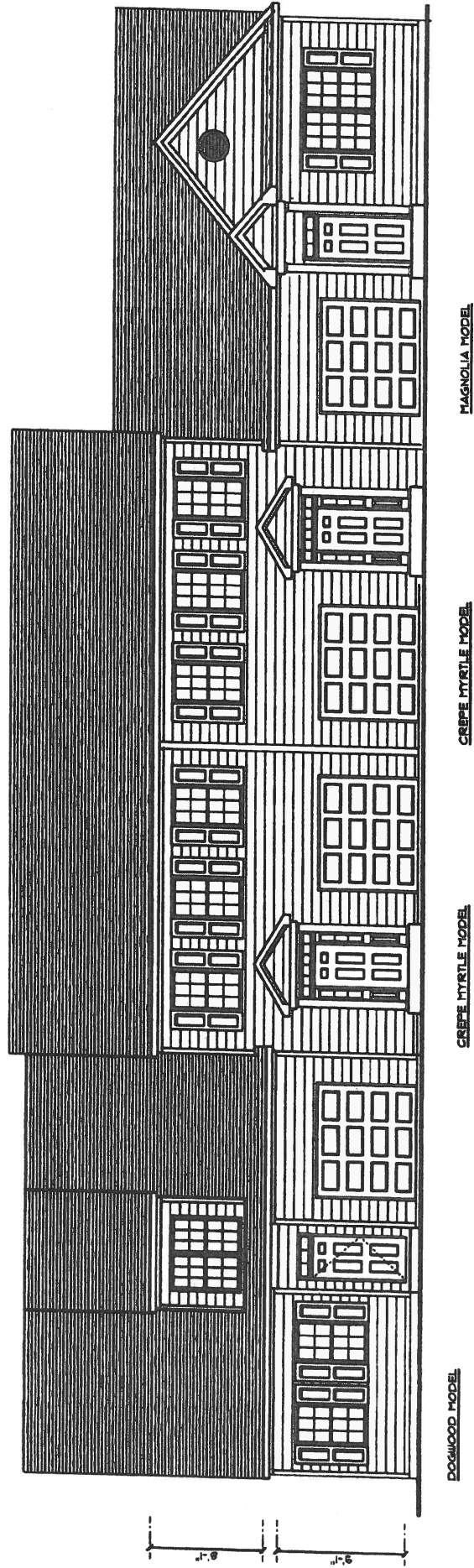
Townhomes At Forest Heights



PROPOSED FRONT ELEVATION



PROPOSED FRONT ELEVATION - 3 UNIT BUILDING



PROPOSED FRONT ELEVATION - 4 UNIT BUILDING