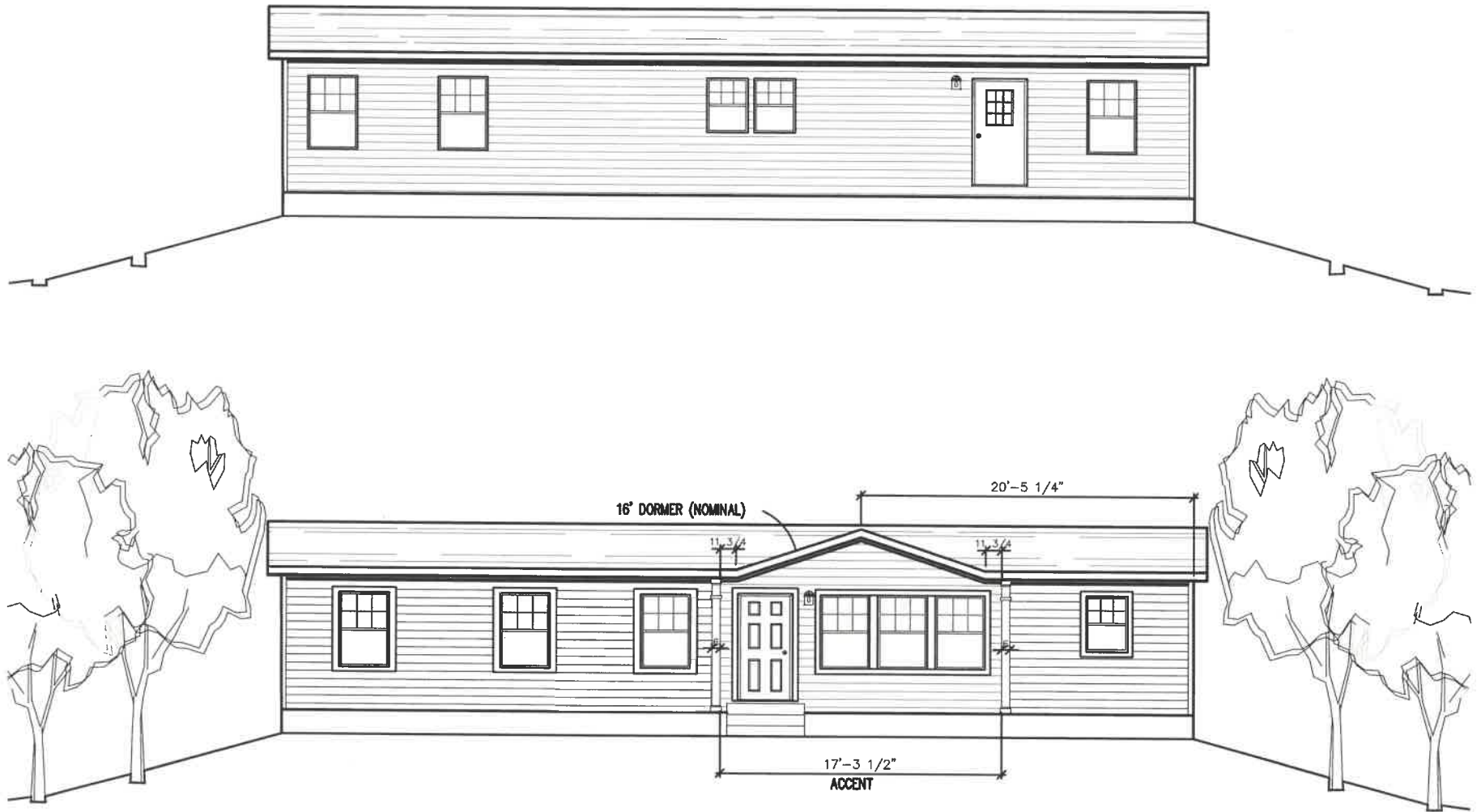


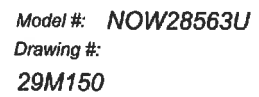
Important: Home will have a concrete block
permanent foundation, not skirting





1,475 SQ.FT. (STD PLAN "CONDITIONED")
 N/A SQ.FT. (W/OPT. PORCH/RECESS "CONDITIONED")

CMH MANUFACTURING	Model #: NOW28563U	Drawing #:
	Date: 4.17.18	Scale: NTS 29M150
Product Designer: Alex Whaley	28' x 56' Ultra II	
ELEVATION		1/ REVISION ECR-632119 5/24/18 EH





ISLAND BREEZE 56'



ISLAND BREEZE 56' Model number: 29NOW28563IH20

3 beds • 2 baths • 1568 sq.ft. • 28' width • 56' depth

Our home building facilities invest in continuous product and process improvements. Plans, dimensions, features, materials, specifications and availability are subject to change without notice or obligation. Renderings and floor plans are representative likenesses of our homes and may differ from the actual homes. We invite you to tour a Home Center near you and inspect the highest value in quality housing available or call (757) 599-3803 to speak with a Home Consultant. Copyright 2017, CMH. All rights reserved.

<https://www.claytonhomesnewportnews.com>

CLAYTON HOMES- NEWPORT NEWS

11281 JEFFERSON AVENUE
NEWPORT NEWS, VA 23601

Monday - Thursday: 9am - 6pm
Friday: 9am - 6pm
Saturday: 9am - 5pm
Sunday: Closed
(757) 599-3803



Our home building facilities invest in continuous product and process improvements. Plans, dimensions, features, materials, specifications and availability are subject to change without notice or obligation. Renderings and floor plans are representative likenesses of our homes and may differ from the actual homes. We invite you to tour a Home Center near you and inspect the highest value in quality housing available or call (757) 599-3803 to speak with a Home Consultant. Copyright 2017, CMH. All rights reserved.

(757) 599-3803